

# BC SUPPORT Unit

## What's Patient-Oriented Research?

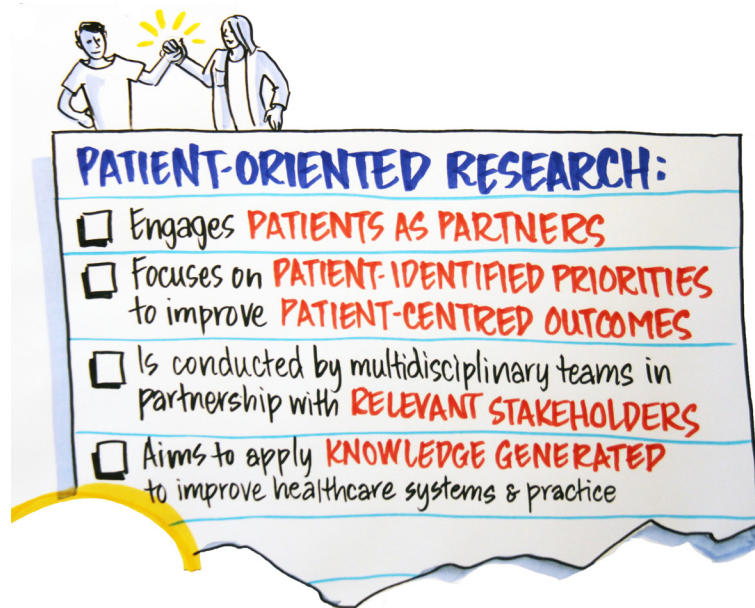
### What's Health Research?

Health research is an organized way of collecting and analysing information to understand and improve our health. We're changing health research to become more patient-oriented.

### What's Patient-Oriented Research (POR)?

Research that is done in partnership with patients, answers research questions that matter to patients, and aims to improve health care.\*

POR includes these criteria as stipulated by CIHR:



Patient research partners should not be the study participants.

We define patient engagement in patient-oriented research as:

- Meaningful and active collaboration in governance, priority-setting, conducting research, and knowledge translation.

Some other terms:

“Patient & Public Involvement (PPI)”

“Public Participation”

“Patient Engagement”

\*If you'd like to learn about the Strategy for Patient-Oriented Research (SPOR) definitions, please see the Canadian Institutes of Health Research (CIHR) website: <http://www.cihr-irsc.gc.ca/e/41204.html>